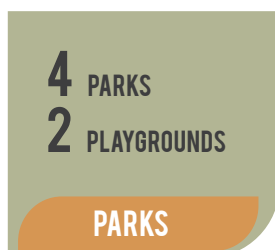




NEIGHBOURHOOD PROFILE – GRANDVIEW-WOODLAND

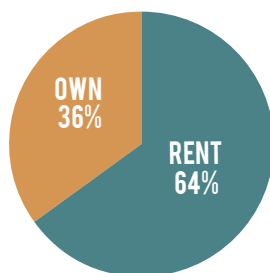
Grandview-Woodland stretches from the Burrard Inlet to Broadway, and is built on a rise with “grand views” of Downtown to the West and across the water to the North. This hip, culturally diverse neighbourhood encompasses the iconic Commercial Drive area where locally-owned boutiques, independent cafes and eateries, organic food markets, and eclectic entertainment venues offer patrons a truly unique experience.

This neighbourhood is well connected by public transportation, including two SkyTrain lines. Homes in Grandview-Woodland consist of a mix of low-rise apartments, duplexes, and single-family dwellings. Many residents in this area have opted to renovate existing properties rather than replace them. As a result, colourful heritage homes and charming cottages characterize this vibrant community.

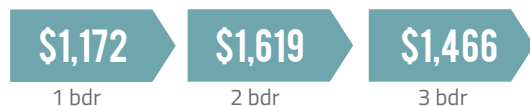


HOUSING

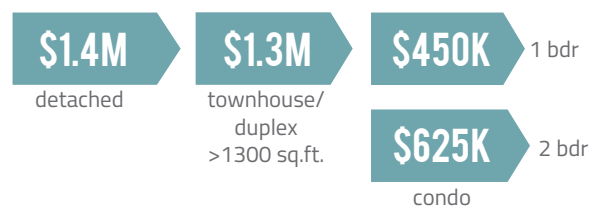
OWN VS. RENT



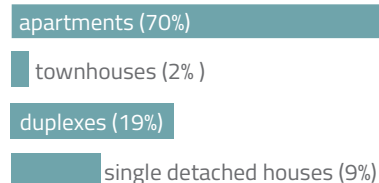
AVERAGE MONTHLY RENT



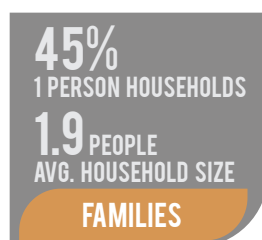
MEDIAN SOLD PRICE



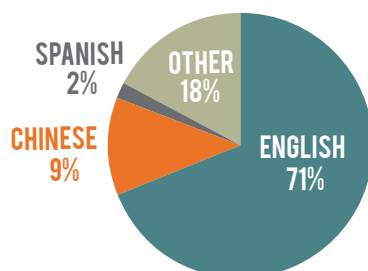
DWELLING TYPE



DEMOGRAPHICS



MOTHER TONGUE



AGE GROUPS





PUBLIC SCHOOLS

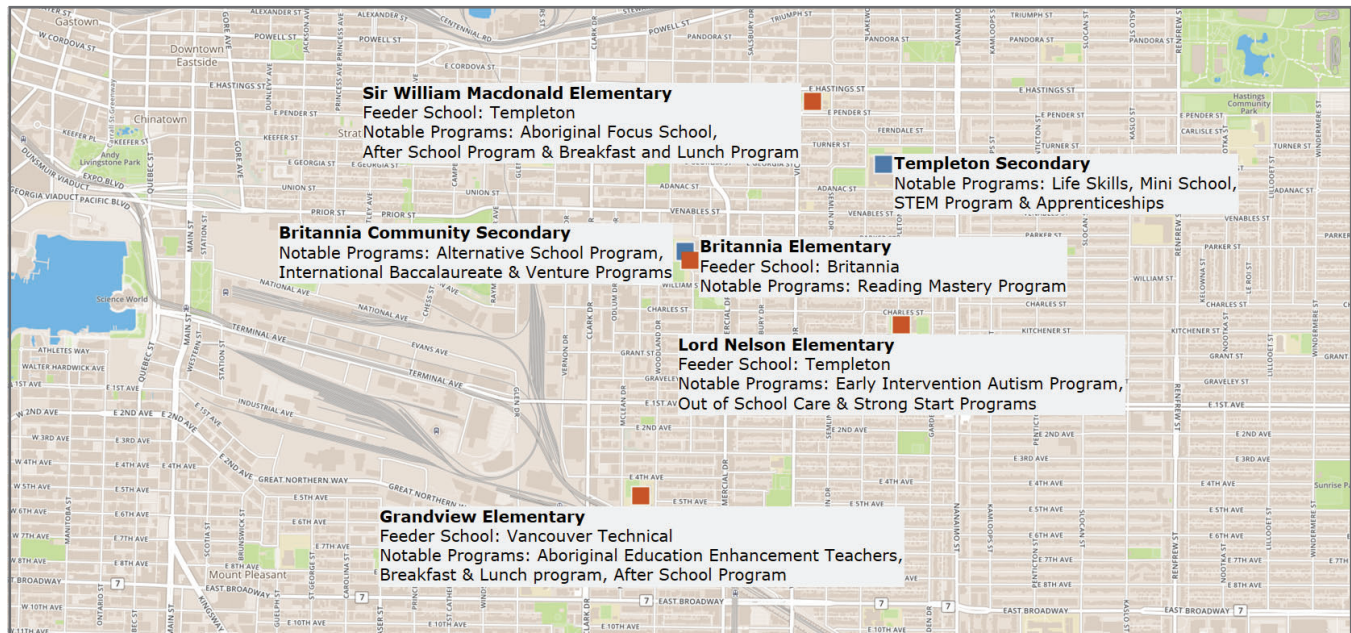


Photo from www.mashedthoughts.com



Photo from www.weloveeastvan.com

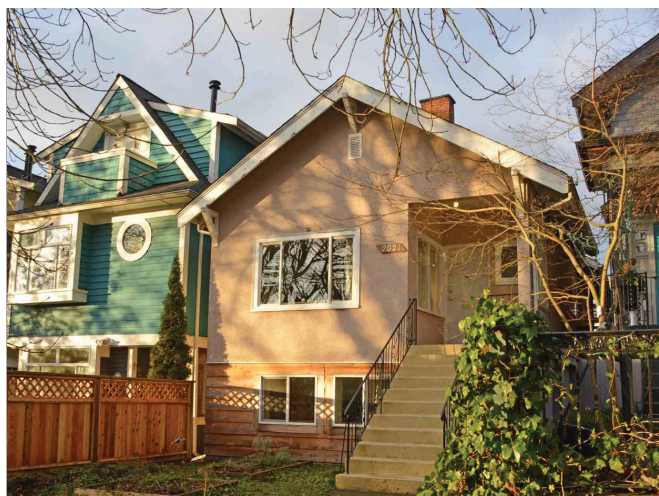


Photo from www.davidcampbellrealty.com



Photo from www.gwfoodconnection.files.wordpress.com